

Sheffield River Works

External Consultation Meeting

ICOSS Building, University of Sheffield

12th February 2010

General Background

Following a meeting back in October 2009 organised by the Waterways Strategy Group and hosted at the ICOSS Building by the URSULA project staff and students, the Environment Agency organised a follow up meeting. This meeting was designed to gauge progress in engagement and communication with respect to their Sheffield River Works programme. It was also designed to update the various external stakeholders on the details of the next phase of the works, prior to their commencement in mid-February.

This document will provide a list of the external stakeholders detailing who was invited and who was able to make it on the day. It provides an outline of the format of the day and then goes on to give details of the presentation that was given and the topics/ questions that were raised during the group discussion sessions and the summary session after lunch.

Invitees/ Attendees:

Attended	Name	Organisation	Contact details
N	Roger Kite	Rivelin Conservation Volunteers Group	rvcg@supanet.com
N	Simon Ogden	Sheffield City Council	Simon.Ogden@sheffield.gov.uk
N	Julie Watson	Sheffield City Council	Julie.Watson@sheffield.gov.uk
Y	Ric Bingham	Sheffield City Council	Ric.Bingham@sheffield.gov.uk
Y	Julie Westfold	Sheffield City Council	Julie.Westfold@sheffield.gov.uk
N	Jim McNeil	Sheffield City Council	jim.mcneil@sheffield.gov.uk
N	Paul Boden	Sheffield City Council	Paul.Boden@sheffield.gov.uk
N	Keith Missen	Sheffield City Council	Keith.Missen@sheffield.gov.uk
N	Roger Nowell	Sheffield City Council	roger.nowell@sheffield.gov.uk
N	Bob Wardle	Sheffield City Council	bob.wardle@sheffield.gov.uk
N	Betty Anyika	South Yorkshire Forest Partnership	betty.anyika@syforest.co.uk
Y	Krys Craik	South Yorkshire Forest Partnership	Krys.craik@syforest.co.uk
N	Graham Ramsden	British Waterways	graham.ramsden@britishwaterways.co.uk

Y	Tom Wild	University of Sheffield / Don Catchment Rivers Trust	t.wild@sheffield.ac.uk
Y	David Lerner	University of Sheffield	d.n.lerner@sheffield.ac.uk
Y	Simone Allin	University of Sheffield	s.allin@sheffield.ac.uk
Y	Berna Keskin	University of Sheffield	b.keskin@sheffield.ac.uk
N	Martin Dallimer	University of Sheffield	M.Dallimer@sheffield.ac.uk
Y	Nicola Dempsey	University of Sheffield	N.Dempsey@sheffield.ac.uk
Y	Peggy Haughton	University of Sheffield	trp08gh@sheffield.ac.uk
N	Steve Smith	Rotherham Metropolitan Borough Council	Stephen.Smith@rotherham.gov.uk
Y	Greg Lindley	Rotherham Metropolitan Borough Council	Greg.Lindley@rotherham.gov.uk
Y	Lisa Judson	Sheffield Futures / Five Weirs Walk	Lisa.Judson@sheffieldfutures.org.uk
Y	Tony Canning	Upper Don Walk Trust	builder.acb@blueyonder.co.uk
N	Helen Batt	River Stewardship Company	Helen.Batt@groundwork.org.uk
N	Mike Rennison	Sheffield City Kayak Club	Mike.Rennison@sheffield.ac.uk
N	David Rowley	Don Catchment Rivers Trust	dwrowley@btinternet.com
N	Chris Firth	Don Catchment Rivers Trust	christopher@firth70.orangehome.co.uk
Y	Paul Gaskell	Wild Trout Trust	pgaskell@wildtrout.org
Y	John Blewitt	SPRITE	blackgnat@blueyonder.co.uk
N	John-Paul Ward	Sheffield Wildlife Trust	j.ward@wildsheffield.com
N	David Stewart	RFERAC	david@davidstewart30.orangehome.co.uk
N	Kathy Brooke	Wicker traders Forum	Kathy.Brooke@syacltd.co.uk
N	Raymond Walton	SYAC	raymond@syacltd.org.uk
Y	Chris Hawksworth	Canoe England	chris.hawkesworth@canoe-england.org.uk
Y	Will Brown	Salmon & Trout Association	willb@dsl.pipex.com
N	Stuart Crofts	Salmon & Trout Association	Stuart Crofts - PENINE@troutbum.freemove.co.uk
Y	Hart Rachel (DEL)	Sheffield City Council	rachel.hart@sheffield.gov.uk
Y	John Lewis	Sheffield City Kayak Club	lewis-john14@sky.com

Y	Christine Ball	South Yorkshire Industrial History Society	c.ball@sheffield.ac.uk
N	Richard Atkinson	EA - Fisheries Recreation & Biodiversity	richard.atkinson@environment-agency.gov.uk
Y	Simon Hinkins	EA - Operations Delivery Technical Support	simon.hinkins@environment-agency.gov.uk
Y	Ryan Farrell	EA - Operations Delivery Technical Support	ryan.farrell@environment-agency.gov.uk
Y	Sarah Clarke	EA - Operations Delivery Technical Support	sarah.clarke@environment-agency.gov.uk
Y	Matt Simpson	EA - National Environmental Assessment Service	matt.simpson@environment-agency.gov.uk
Y	Rachel Hughes	EA - External Relations	rachel.hughes@environment-agency.gov.uk
Y	Paul Stockhill	EA - Operations Delivery Technical Support	paul.stockhill@environment-agency.gov.uk
Y	Jonathan Moxon	EA - Operations Delivery Technical Support	jonathan.moxon@environment-agency.gov.uk
Y	Glyn Davies	ArchHeritage/ York Archaeological trust	gdavies@yorkat.co.uk

Agenda:

- **09:30–10:00 - Refreshments**
- **10:00-10:15 – Introductions, explanation of the meeting format, confirmation of information distribution**
- **10:15-11:00 – Description of the objectives of the meeting and presentation on the progress of the EA’s Sheffield River Works programme**
- **11:00-12:00 – Group discussion & feedback sessions**
- **12:00-13:00 – Lunch**
- **13:00-13:45 – Feedback from group sessions, general Q&A session (full group)**
- **13:45-14:00 – Meeting Summary, next steps, close.**

Meeting objectives:

- Improve communication and relationships
- Feedback lessons learnt from previous meetings
- Provide update/ gain feedback on communications strategy
- Gain understanding of each others goals and objectives
- Share information and gain feedback for the planning and delivery of the works programme
- Distribute information & provide progress update on upcoming projects
- Answer queries/ concerns about upcoming projects

Presentation

The slides from the presentation given by Jonathan Moxon of the EA are given below, a full electronic copy of this presentation is available from Jonathan if you want one.

Sheffield River Works

Environmental Report

External Consultation

12th February 2010

Consultation Meeting Agenda

- 09:30–10:00 - Refreshments
- 10:00-10:15 – Introductions, explanation of the meeting format, confirmation of information distribution
- 10:15-11:00 – Description of the objectives of the meeting and presentation on the progress of the EA's Sheffield River Works programme
- 11:00-12:00 – Group discussion & feedback sessions
- 12:00-13:00 – Lunch
- 13:00-13:45 – Feedback from group sessions, general Q&A session (full group)
- 13:45-14:00 – Meeting Summary, next steps, close.

Getting information

- Attendance/ invite list with contact details
- Presentation slides
- Summarised notes from group sessions
- Key points and conclusions from meeting
- Actions
- Future contact

Consultation Meeting Objectives

- Improve communication and relationships
- Feedback lessons learnt from previous meetings
- Provide update/ gain feedback on communications strategy
- Gain understanding of each others goals and objectives
- Share information and gain feedback for the planning and delivery of the works programme
- Distribute information & provide progress update on upcoming projects
- Answer queries/ concerns about upcoming projects

SHEFFIELD RIVER WORKS

NORTH EAST REGION - YORKSHIRE AREA

- Paul Stockhill – Operations Delivery Team Leader
- Jonathan Moxon – Ops. Delivery Technical Specialist
- Ryan Farrell - Project Manager: Blonk Street
- Sarah Clarke – Project Manager: Effingham Street
- Simon Hinkins – Project Manager: Nursery Street
- Jerome Masters – Fisheries
- Sally Edwards – Biodiversity
- Bruce Munro / Matthew Simpson - NEAS
(NEAS =National Environmental Assessment Service)

FLOODS 2007

- Floods of 2007 highlighted issue of trees and shoal material (silts & gravels) in watercourse
- Build up of shoal material around bridges, downstream of weirs and on the inside of bends
- Additional funding from DEFRA to address this issue of the build up of obstructions in the channel
- Post flood pictures

Damage caused by trees during floods



Damage caused by trees during floods



Working With Others

- What were we told?
 - Communication needed to improve
 - Not involving all interested parties/ stakeholders
 - Didn't keep interested parties updated
 - Didn't listen to advice/ information from outside parties
 - Not giving a clear message to people about our objectives
- What have we learnt?
 - Need to reassess and re-define our objectives for the works
 - Need to re-identify stakeholders
 - Need to establish better communication links
 - Need better organisation of communication and engagement with stakeholders
 - Need to plan works programme and distribute more often

Working With Others

- Produced an 'Engagement Plan'
 - Internal Project Team
 - Business & Engagement Objectives agreed
 - External Stakeholders identified
 - Type/ level of engagement discussed with core team and stakeholders
 - Phased plans for delivery of engagement and delivery of works
- Put this into practice
 - Regular progress meetings with core team
 - Regular progress meetings with SCC - Multi-organisation agreed Protocol
 - Consultation meetings with key external stakeholders
 - Environmental report, Information leaflets, On-site Info boards, Press releases, presentations at public/ external meetings

WORKING TOGETHER

- Internal consultees
- External consultees – Engagement Plan
 - Sheffield City Council
 - Sheffield Waterways Strategy Group
 - Sheffield Wildlife Trust
 - River Stewardship Company
 - Specialist voluntary/ interest groups
 - Don Catchment Rivers Trust, Salmon & Trout Association, Don Fisheries Consultative Association, URSULA, Wild Trout Trust, SPRITE, Canoe England, & many more
 - Natural England & English Heritage
 - Landowners / Local communities

WORKING TOGETHER

- Consultation
 - EIA reports
 - Strategy group meetings
 - Multi-organisation agreed Protocol
- Feedback
- Discussions
- Lessons Learnt – Improvements going forward

Environmental Report

- Purpose – to describe the baseline environment (habitats, protected species, fish) and identify potential impacts
- Identify mitigation requirements (to be developed further in specifications for works)
- A means of aiding consultation as part of the statutory advertising
- To be available during the statutory 28 day advertising period



SURVEYS, ASSESSMENTS & MITIGATION

- Protected species (eg. Otters)/ Habitats
 - Surveys
 - Project planning
 - Mitigation plans – Planting, habitat creation
- Invasive weed control
 - Surveys
 - targeted management – connected to EA works
 - Collaborative wider scale future management with Sheffield Stewards / landowners
- Fisheries
 - Surveys
 - Habitat protection, mitigation, improvement
 - Access, recreational improvements



2008 WORKS COMPLETED – Phase 1

- ✓ Niagara Weir
- ✓ Station Lane – Oughtibridge
- ✓ Hillsborough Weir
- ✓ Kelham Island



2009 WORKS COMPLETED – Phase 2

- ✓ Five Weirs Walk: East Coast Rd to Newhall Rd.
- ✓ Norfolk Bridge (Burton Weir)
- ✓ Jordan's Dam – Blackburn Meadows
- ✓ Malin Bridge (Mitigation works to complete)



RIVER DON PLANNED WORKS 2009-2010 – Phase 3

- ⇒ Nursery Street (Corporation Bridge to Ladys Bridge)
- ⇒ Blonk Street (Blonk Street Bridge to Wicker Viaduct)
- ⇒ Effingham Street (Weir to Bailey bridge)



Nursery Street (Corporation Bridge to Ladys Bridge)



Nursery Street (Corporation Bridge to Ladys Bridge)



Nursery Street (Corporation Bridge to Ladys Bridge)

- Removal of all trees on the left bank of the River Don in the area shown green on the plan.
- Construction of a site compound and an access ramp in the area shown blue on the plan. The ramp will be created approx 20m downstream of the footbridge.
- Construction of a submerged stone track across the river (approx 4m wide) to access the right bank from the compound.
- Removal of all trees on the shoal along the right bank in the area marked yellow on the plan.
- Removal of shoal material to the extent shown on the attached plan. A 2m wide area of shoal will be left along the entire stretch of bank that is being reduced.
- Planting of carefully selected low growing vegetation on the remaining shoal will discourage further trees from self seeding as well as encouraging a diverse habitat.
- Mitigation to provide fish habitat (see later mitigation slide)
- At the end of the works as the ramp is being removed, the compound area will be landscaped to assist the Council's future plan to create a riverside park in this location.



Blonk Street (Blonk Street Bridge to Wicker Viaduct)



Blonk Street (Blonk Street Bridge to Wicker Viaduct)



Blonk Street (Blonk Street Bridge to Wicker Viaduct)

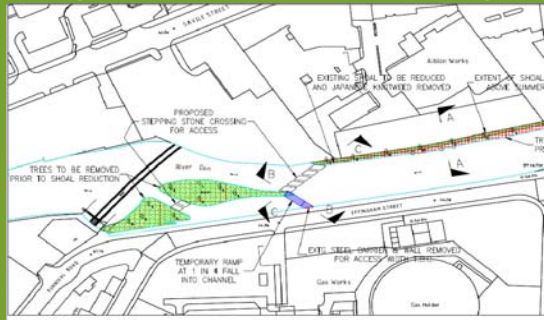
- ➔ Sharps contractor (possibly SCC) to remove hypodermic needles from riverside channel
- ➔ Closure of SCC Willey Street and the SYAC overflow car parks.
- ➔ Implement public footpath (Five Weirs Walk) temporary diversion around compound and river frontage (shown red dotted line on the plan)
- ➔ Set up site compound (shown red on the plan)
- ➔ Create a temporary access ramp(s) into the river
- ➔ Removal of all trees on the shoal beside the left bank in the area marked in magenta shading on the previous plan
- ➔ Removal of shoal material marked in magenta shading shown on the previous plan. A narrow shallow berm approx 2m wide will remain beside the left river wall.
- ➔ The existing small central island is to remain.
- ➔ The berm is to have appropriate low growing planting
- ➔ Mitigation to provide fish habitat (see later mitigation slide)
- ➔ Reinstatement of footpath, handrail and car parks



Effingham Street (Walk Mill Weir to footbridge)



Effingham Street (Walk Mill Weir to footbridge)



Effingham Street (Walk Mill Weir to footbridge)

- The **trees** on the shoal islands marked red on the plan will be taken out before the bird nesting season.
- Construction of a **ramp** to access the river shown blue on the plan.
- Reduction of **shoal** height, this is to include small variations in level and section at waters edge so that it looks as natural as possible and will create valuable habitat features
- During the shoal works the **Japanese knotweed** will also be removed in a controlled manner with all arisings going to a licensed site. The remaining shoals will be sprayed/Stem injected to discourage re-growth from the rhizomes before the shoal can be planted.
- **Planting** of carefully selected low growing vegetation.
- Mitigation to provide fish habitat (see later mitigation slide)



Mitigation Proposals

- Seasonal constraints (avoiding bird breeding seasons and fish spawning)
- Limiting geomorphological effect (leave as much island shoal as possible, at least above low flow/summer water level)
- Additional in-stream features (rock groyne, boulder clusters, rock berm, riffles)
- Planting with appropriate species (i.e. that don't pose flood risk)
- 'Green' engineering – e.g. securely pinned coarse woody debris
- Maintain berm level at least 0.5m above water level (for biodiversity benefit, e.g. otter access)
- Invasive species control
- Confining plant movements in the channel to designated areas
- Standard good site practice / working near water measures to reduce pollution risk



Programme for Phase 3

- Key dates:
 - 13/1/10 – External Consultation on the report
 - 20/1/10 – 28 Day statutory Public Consultation Period (Advertised)
 - 29/1/10 – **Angling Interest/ Fisheries Consultation Meeting**
 - 3/2/10 – **Environmental Report Published**
 - 12/2/10 – (TBC) External consultation, local residents, businesses, external stakeholders
 - **8-15/2/10 – Access and compounds to start**
 - 17/2/10 – Tree and shoal works to begin
 - 17/2/10 – Mitigation planting and channel works to start
 - April 2010 onwards – Completion of any outstanding issues and promotion and development of future management strategy



A LOOK TO THE FUTURE

- Riparian owners
 - Taking responsibility
 - Working with a manageable site
 - Consultation
 - Education/ support
 - Collaboration
- Access
 - Requirements in the short term
 - Planning/ development guidance
- Strategies
 - Flood Risk Management
 - Environmental/ Conservation
 - Economic/ Development



Group Discussion Sessions

The list of attendees was split into three groups randomly giving each group a good mix of interests and specialisms from a range of organisations. Each group had a two EA facilitators compiling the questions/ statements and responses to the three questions that were handed over on post-its during a 45 min discussion period. This time allowed each of the members of the groups to give their own answers to the three questions we posed and also get involved in small group discussions (6-8 people) with respect to the specific questions and the works in general. The three questions posed are given below, a list of the responses we got back is on the following pages. These responses were grouped together in terms of their subject areas and fed back to the whole group by one EA facilitator (the three project managers for the projects in this current phase of works – Ryan Farrell, Simon Hinkins & Sarah Clarke)

What have the EA done well so far on the Sheffield River Works programme?

What could the EA have done better on the Sheffield River Works programme?

What aspects of the Sheffield River Works programme are important to get right going forward for them to be successful?

<i>Subject</i>	<i>What have the EA done well so far on the Sheffield River Works programme?</i>	<i>What could the EA have done better on the Sheffield River Works programme?</i>	<i>What aspects of the Sheffield River Works programme are important to get right going forward for them to be successful?</i>
Communication with Stakeholders & the general public	Extended consultation	Notice boards at Malin Bridge didn't reflect the works that were going to take place	Organisations such as the Sheffield Wildlife Trust can engage volunteers, this can increase value for money and has the ability to attract charity funding
	Promotion and increased awareness of the river and the competing interests in it.	Confused about what the notice boards were trying to do	Use the knowledge of local people regarding species in and around the river to boost knowledge beyond one-off surveys
	Created a good template for future consultation	Previous works (phase 1&2) have created major trust issues that are still having an impact on relationships	Make people aware that NO scheme can ever abolish floods!
	Have improved communication processes	Inform & contact people in a more controlled manner avoid ad-hoc contact with people	Talk to local people about the best ways of getting information to them - Statutory notices, newspaper, radio etc.. Not always effective
	consultation have been regular and adequate	Earlier & more consultation	Be clearer about the scientific case for the works in terms of flood risk especially shoal removal/
	Retrieved consultation success from a poor start	Use/ Share best practice	Transparent & robust processes to translate agreed plans into realised work within the guidelines
	Listening more - but are approaches changing is it consultation or partnering?	Consultation now before we decide what is best to do	Do community/ stakeholder engagement earlier well in advance/ more consultation
	Aims & strategies are very well defined they are very clear, the framework of the project is well defined aswell	lack of understanding of the environmental impact of the works - Malin Bridge damage	Keep listening & ensure consultation is fed through into practice
	Communication started earlier	Advertise, discuss proposals with local people and listen to their feedback	Be clear about the EA's role in & Keep consultation links open to explore the sustainable maintenance strategy
	Improved consultation - changed practice/aims in response to criticism		Take more time to do consultation - it takes time to listen to and take notice of responses

	Trying harder to consult/ started to listen to groups		Continuous engagement with local groups using the river stewardship company
			Tackle Riparian ownership collectively
			Raise awareness of (produce impetus for) controlling inputs of flash flooding water
			Try to agree a balance of all interests
Organisation of resources, project management & Strategic planning	impressive response to an urgent situation	Only seem to care about projects/ have an awareness of timing of works when projects are about to start	Long-term strategy needs to be in place & we need to improve our knowledge
	better planning of resources internally	Control of actions of operational site staff if different to planned works	We need to follow-up this consultation process with a commitment to an on-going management strategy
	Reduced flood risk	Ensured that a consistent approach is followed	Manage the whole river system/ resource catchment wide measures (Don Catchment Rivers Trust)
	Re-cycled materials removed	Tried to please all individually and ended up pleasing none	Need to make it clear that this is NOT just one-off engineering works and that the EA will NOT just walkaway afterwards
	Gained momentum and interest to try and secure works and funding in future	don't micro manage each section of river	Prevention rather than cure is the best approach to avoid a 'next time' where possible
	Involved geomorphologist (lately)	Water level that's has been left on previous jobs too shallow to paddle in, is it possible increase depths at summer water levels	Provide access to river at water level and rock groynes on the river bed as in channel habitat
	Some good ecological/ river restoration but should be planned & implemented together with partners	Finish the Catchment Flood Management Plans earlier - urgently needed!	Better advanced planning of vegetation management - using river stewardship company
	Overall concept good		Ensure long-term maintenance does not lose momentum
	Better mitigation for biodiversity/ ecology being given better consideration		Use a rolling programme projects that look at small section of the river leaving other sections for wildlife
			Use these networks (consultation groups) to improve catchment flood management planning

			Ensure that commitments agreed on paper and in meetings are followed through especially planting and mitigation proposals
			Need a best practice manuals
			Use existing information and guidance policies (eg gravel removal, adaptation to deviation from planned works) state/ acknowledge this in the reports/ plans
			Tackle Riparian ownership collectively
			More features introduced or retained to create more moving water for longer stretches (approx 500m)
			Should not be looking at short term individual projects but long-term strategic plan
			Limit extraction of river bed material to a minimum
			In future identify pinch points and reduce excavations in between/ concentrate on pinch points and not just side bars and mid channel shoals
Environmental Report, Impact assessment	Report for Phase 3 seems better than for Phase 2	More emphasis on remedial works as this is only a start	Consider planned green infra-structure along the wider Wicker area
	Archaeology has been raised/ considered	Need to justify the decisions about trees and shoals photos are not enough to convince	Involve a geomorphologist earlier
	More details of plans for delivery and mitigation	Greater need for the EA to better understand the socio-economic aspects of the programme - 'seeing the river as an asset!'	Consider the archaeological implications when planting trees
		Surveys and modelling information must be better	Find solutions for anchoring important trees in the channel
		Fisheries surveys - 1 survey in 2005 in 1 location not enough	Be more creative in mitigation opportunities
		Archaeology not fully considered in the river channel just the river banks	Could use locally sourced stone instead of limestone
		Research archaeological records held by the SYAS	Earlier consideration of archaeological aspects of the river channel

			Closer relationships with modellers to provide data and information
			Explicitly state (in report) the new standard approach to tree removal ie coppice rather than root system removal
			Provide more scientific support to works plan in reports for the consultation
			Consider planting trees across the river catchment - 'planting the right trees in the right places'

Summary/ Q&A session

In this final session following the feedback from the group sessions Jonathan Moxon encouraged an open questions and answer session from the whole group as an opportunity to raise any points that were still unanswered or that hadn't yet been raised. The following key points were raised (a summarised answer to these questions is given in italics after each one):

- How can we get some sort of guarantee that the rivers in Sheffield will be maintained/ managed effectively in future? *It was advised that the EA could not guarantee this alone, but that ensuring a sustainable future management strategy for the Sheffield rivers and specifically the sites that have formed part of the EA's programme is one of three key objectives that the EA has for this programme of works. With this very much in mind it is paramount to the success of the programme and the projects within it that we achieve this objective.*
- Although the general feeling among the consultees was that the EA were gauging their approach to this phase of the works about right, some members of the group wanted to know how well this approach and the information within it can be conveyed to the guys on the ground ('the man in the machine')? *It was explained that this is an aspect of the planning process that the EA have paid particular attention to. The Operations Delivery and external contractors that will be delivering the works have been involved with project progress meeting throughout the planning phase of the works. The EA will also be involving not only the project manager (Engineer) but also the Fisheries and Biodiversity technical officers in the site supervision and consultation throughout the on-site works period.*
- Can we get to see more of the plans of the detailed project works for this phase of the works as and when they are available? *Yes, although many of the detailed decisions regarding on site works have to be made by the EA project team we think its important to share this information with our stakeholders so they fully appreciate what will be implemented at the sites and why. Detailed designs including mitigation proposals for both planting and in-channel features will be distributed to external consultees as soon as the plans have been digitised, we are currently doing this. Regular progress updates on how the works are going including changes to works plans will be communicated to all interested parties at regular intervals throughout the works.*